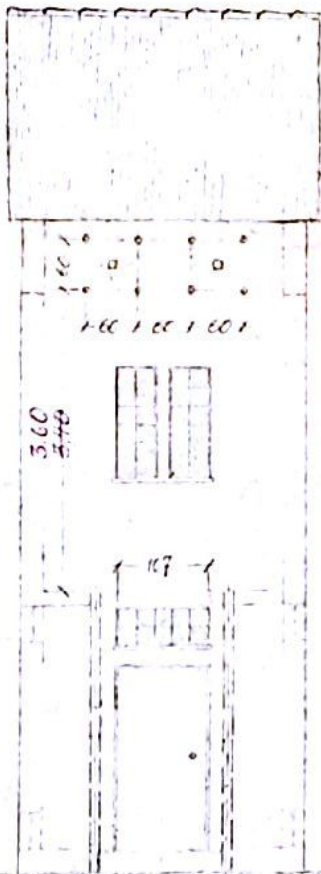


Nordwestseite

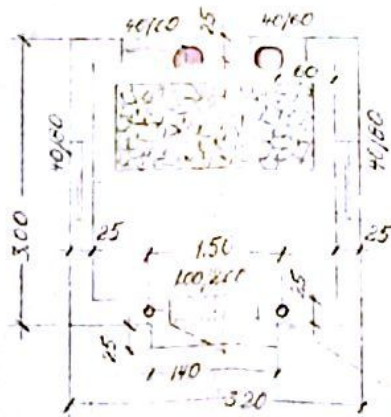
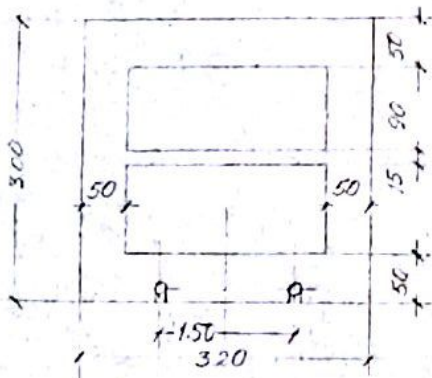
Südwestseite



Fundament

Erageschoß

Obergeschoß



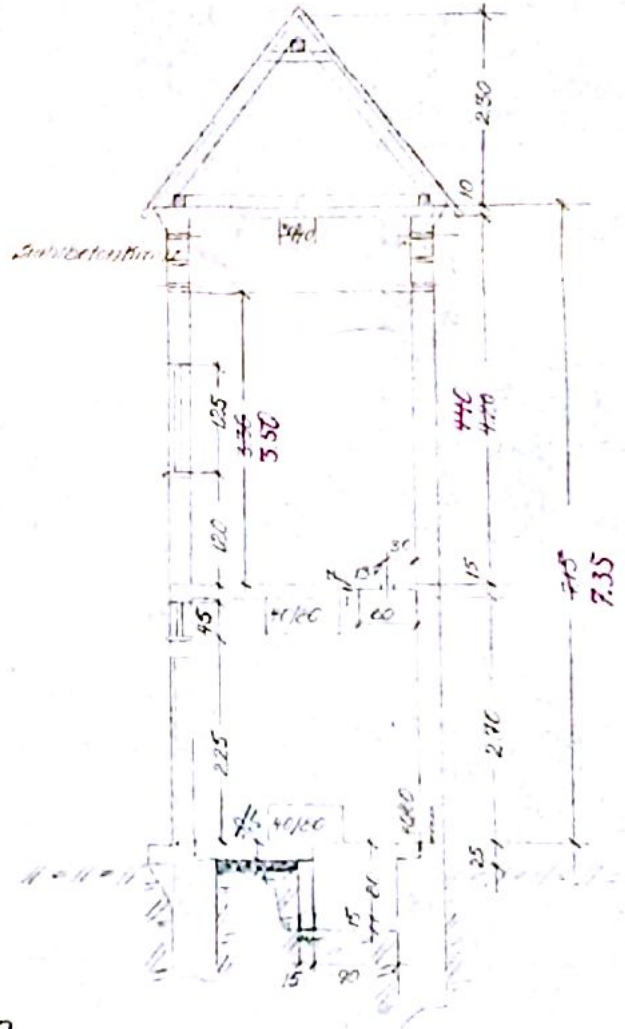
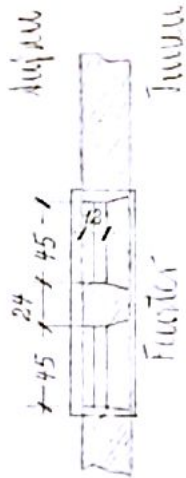
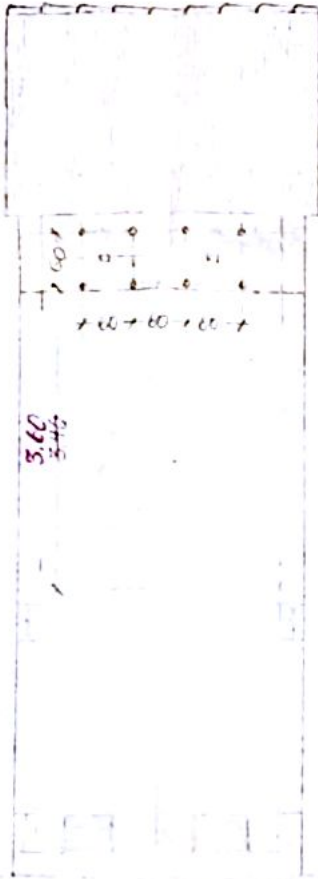
Bauunternehmer L.W.

Die Bauherrn die...

Gefertigt: NÜBA Gienjen/31.23.54 TT.

Stadtseite

Schnitt



1.10
1.10
1.10
1.10

M 1:50

Umspannstation II Leipheim.

Anerkennung: Giengen/Br 2.3.54

Gesellschaft: MITTELSCHWÄBISCHE ÜBERLANDZENTRALE AG GIENGEN/BR